

# FOR LEASE

## RIVERTOWN PLAZA

3151 - 3171 EAST JEFFERSON AVENUE  
DETROIT, MICHIGAN 48207



# EXCLUSIVE

— REALTY —



## PROPERTY FEATURES:

- For Lease 1,270 square feet (Former Check n'Go Space)
- 3 Star Retail Freestanding Shopping Center
- Contact Agent for Lease details
- Building Size: 9,698 square feet
- 71 surface parking spaces
- Traffic Count of 29,070 vehicles per day
- Very walkable
- Tenants include: PizzaPapalis, T-Mobile
- Corner Lot
- Located on the Bus Line



FOR MORE INFO CONTACT: STEVE SAGMANI/TERRY EDMONDSON

# 313-963-7653

28 W. Adams Avenue, Suite 1550

Detroit, Michigan 48226

[steve@exclusive-realty.com](mailto:steve@exclusive-realty.com)/[terry@exclusive-realty.com](mailto:terry@exclusive-realty.com)

[WWW.EXCLUSIVE-REALTY.COM](http://WWW.EXCLUSIVE-REALTY.COM)



**FOR LEASE**

**RIVERTOWN PLAZA**

3151 - 3171 EAST JEFFERSON AVENUE  
DETROIT, MICHIGAN 48207



**EXCLUSIVE**  
— REALTY —



**FOR MORE INFORMATION CONTACT:**

Steve Sagmani  
Chief Executive Officer  
steve@exclusive-realty.com  
(248) 833-6601

**313-963-SOLD**

Terence Edmondson  
President  
te@exclusive-realty.com  
(313) 243-9013

# FOR LEASE

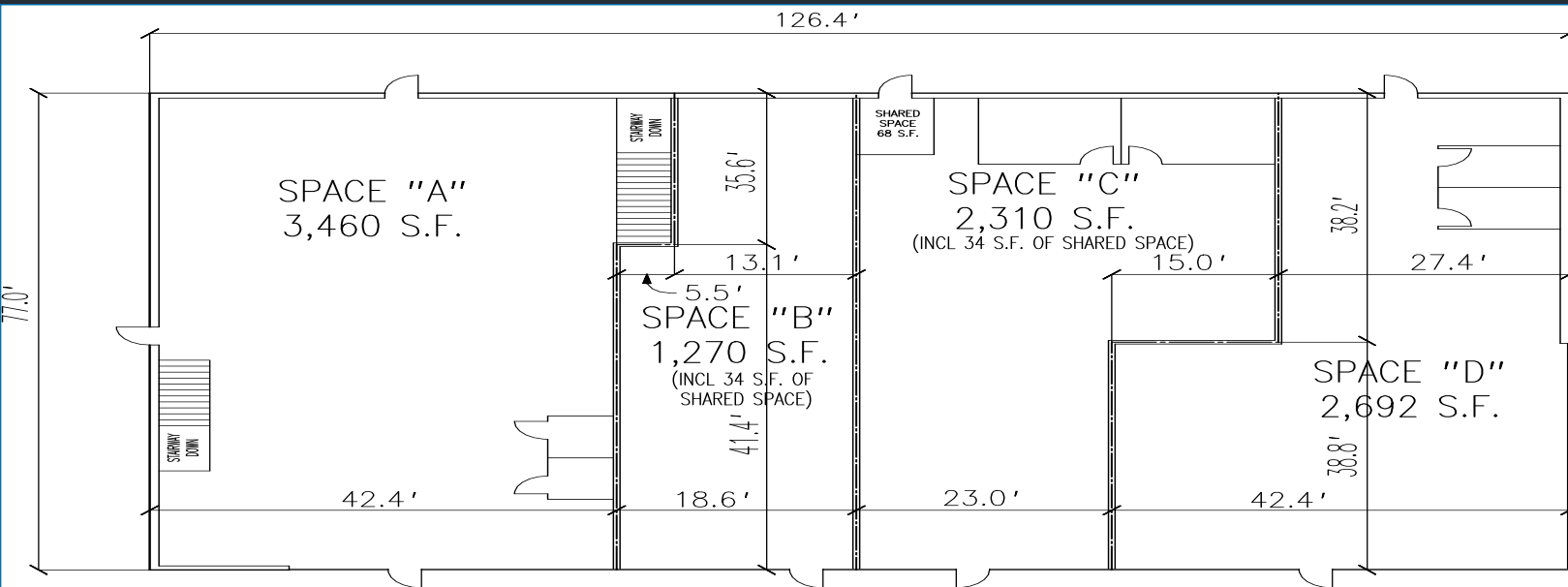
## RIVERTOWN PLAZA

3151 - 3171 EAST JEFFERSON AVENUE  
DETROIT, MICHIGAN 48207

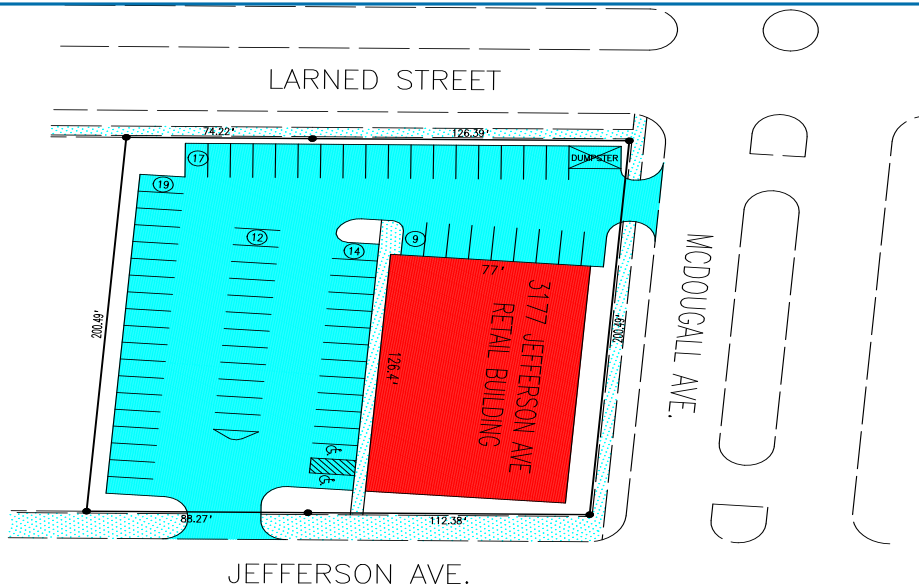


# EXCLUSIVE

— REALTY —



TOTAL BUILDING AREA  
9,732 S.F.



FOR MORE INFORMATION CONTACT:

Steve Sagmani  
Chief Executive Officer  
steve@exclusive-realty.com  
(248) 833-6601

# 313-963-SOLD

Terence Edmondson  
President  
te@exclusive-realty.com  
(313) 243-9013

# FOR LEASE

## RIVERTOWN PLAZA

3151 - 3171 EAST JEFFERSON AVENUE  
DETROIT, MICHIGAN 48207



# EXCLUSIVE

— REALTY —

### DISCLOSURE:

All materials and information received or supplied by Exclusive Realty (hereinafter collectively referred to as “ER”), its directors, officers, agents, advisors, affiliates and/or any third party sources are provided without representation or warranty by ER, its directors, officers, agents, advisors, or affiliates as to the veracity, accuracy or totality, the condition of the property, compliance or lack of compliance with applicable governmental requirements, suitability, financial performance of the property, projected financial performance of the property for any party’s intended use or any and all other matters.

Neither ER, its directors, officers, agents, advisors, or affiliates makes any representation or warranty, express or implied, as to accuracy or totality of any of the materials or information provided, derived, or received. Materials and information from any source, whether written or verbal, that may be furnished for review are not a substitute for a party’s active conduct of its own due diligence to determine these and other matters of significance to such party. ER will not verify any such matters or conduct due diligence for a party unless otherwise agreed in writing.

### ALL PARTIES SHALL CONDUCT THEIR OWN INDEPENDENT INVESTIGATION AND DUE DILIGENCE:

Any party contemplating or under contract or in escrow for a transaction is urged to verify all information and to conduct their own inspections and investigations including through appropriate third- party independent professionals selected by such party.

All financial data should be verified by the party including by obtaining and reading applicable documents and reports and consulting appropriate independent professionals. ER makes no warranties and/or representations regarding the accuracy, totality, or relevance of any financial data or assumptions. All data and assumptions regarding financial performance may differ from actual data or performance. Any estimates of market rents and/or projected rents that may be provided to a party do not necessarily mean that rents can be established at or increased to that level. Parties must evaluate any applicable contractual and governmental limitations as well as market conditions, vacancy factors and other issues in order to determine rents from or for the property.

Legal questions should be discussed by the party with an attorney. Tax questions should be discussed by the party with a certified public accountant or tax attorney. Title questions should be discussed by the party with a title officer or attorney. Questions regarding the condition of the property and whether the property complies with applicable governmental requirements should be discussed by the party with appropriate engineers, architects, contractors, other consultants and governmental agencies. All properties and services are marketed by ER in compliance with all applicable fair housing and equal opportunity laws.

### FOR MORE INFORMATION CONTACT:

Steve Sagmani  
Chief Executive Officer  
steve@exclusive-realty.com  
(248) 833-6601

# 313-963-SOLD

Terence Edmondson  
President  
te@exclusive-realty.com  
(313) 243-9013



# FOR LEASE

## RIVERTOWN PLAZA

3151 - 3171 EAST JEFFERSON AVENUE  
DETROIT, MICHIGAN 48207



# EXCLUSIVE

— REALTY —



### TRAFFIC COUNTS

### DEMOGRAPHICS

INTERSECTION	CARS PER DAY		DEMOGRAPHICS		
			1 MILE	3 MILES	5 MILES
East Jefferson Ave & McDougall NE	29,070	Total Households	6,951	33,128	72,371
East Jefferson Ave & Adair St NE	28,538	Total Population	11,670	65,276	173,278
East Jefferson Ave & Chene St NE	26,504	Average HH Income	\$33,323	\$27,825	\$27,225

### FOR MORE INFORMATION CONTACT:

Steve Sagmani  
Chief Executive Officer  
steve@exclusive-realty.com  
(248) 833-6601

# 313-963-SOLD

Terence Edmondson  
President  
te@exclusive-realty.com  
(313) 243-9013

# FOR LEASE

## RIVERTOWN PLAZA

3151 - 3171 EAST JEFFERSON AVENUE  
DETROIT, MICHIGAN 48207

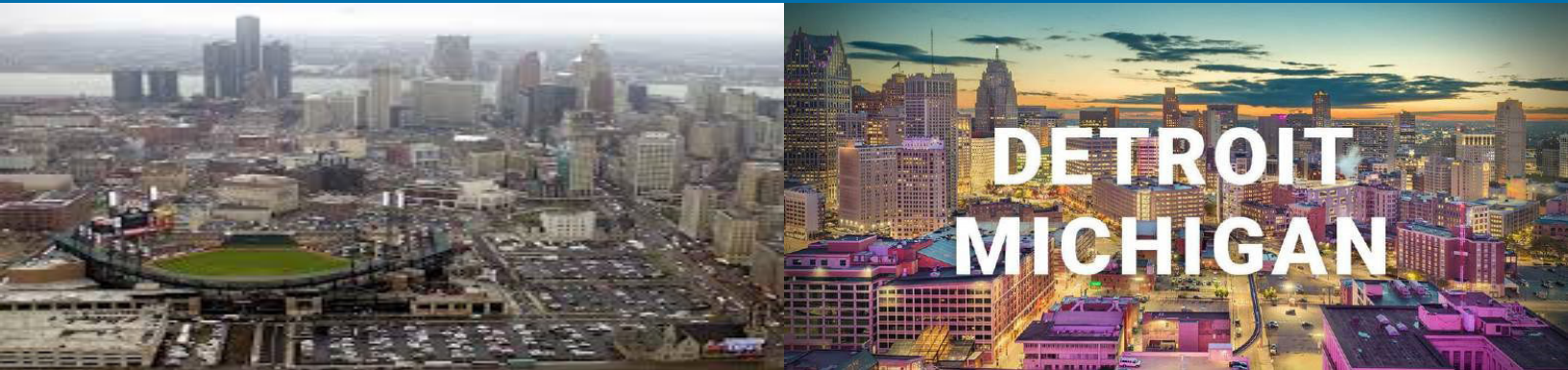


# EXCLUSIVE

— REALTY —

Detroit is the largest and most populous city in the U.S. , State of Michigan, the largest U.S. city on the United States– Canada border, and the seat of Wayne County. The municipality of Detroit had a 2019 estimated population of 670,031, making it the 24th-most populous city in the United States. The metropolitan area, known as Metro Detroit, is home to 4.3 million people, making it the second-largest in the Midwest after the Chicago metropolitan area, and 14th largest in the United States. Regarded as a major cultural center, Detroit is known for its contributions to music and as a repository for art, architecture and design.

Detroit is a major port on the Detroit River, one of the four major straits that connect the Great Lakes system to the Saint Lawrence Seaway. The Detroit Metropolitan Airport is among the most important hubs in the United States. The City of Detroit anchors the second-largest regional economy in the Midwest, behind Chicago and ahead of Minneapolis-Saint Paul, and the 13th-largest in the United States. Detroit and its neighboring Canadian city Windsor are connected through a highway tunnel, railway tunnel, and the Ambassador Bridge, which is the second busiest international crossing in North America, after San Diego–Tijuana. Detroit is best known as the center of the U.S. automobile industry, and the "Big Three" auto manufacturers General Motors, Ford, and Fiat Chrysler are all headquartered in Metro Detroit.



**FOR MORE INFORMATION CONTACT:**

Steve Sagmani  
Chief Executive Officer  
steve@exclusive-realty.com  
(248) 833-6601

# 313-963-SOLD

Terence Edmondson  
President  
te@exclusive-realty.com  
(313) 243-9013