

# FOR LEASE 14906 SCHAEFER ROAD



14906 Schaefer Road, Detroit, MI 48227

**TERRY EDMONDSON**

President  
313.243.9013  
te@exclusive-realty.com

**EXCLUSIVE REALTY**

28 West Adams Avenue  
Detroit, MI 48226  
313.963.7653  
exclusive-realty.com

# DISCLAIMER

## CONFIDENTIALITY AND DISCLAIMER:

### DISCLOSURE:

All materials and information received or derived from Exclusive Realty its directors, officers, agents, advisors, affiliates and/or any third party sources are provided without representation or warranty as to completeness, veracity, or accuracy, condition of the property, compliance or lack of compliance with applicable governmental requirements, developability or suitability, financial performance of the property, projected financial performance of the property for any party's intended use or any and all other matters.

Neither Exclusive Realty its directors, officers, agents, advisors, or affiliates makes any representation or warranty, express or implied, as to accuracy or completeness of the any materials or information provided, derived, or received. Materials and information from any source, whether written or verbal, that may be furnished for review are not a substitute for a party's active conduct of its own due diligence to determine these and other matters of significance to such party. Exclusive Realty will not investigate or verify any such matters or conduct due diligence for a party unless otherwise agreed in writing.

### EACH PARTY SHALL CONDUCT ITS OWN INDEPENDENT INVESTIGATION AND DUE DILIGENCE.

Any party contemplating or under contract or in escrow for a transaction is urged to verify all information and to conduct their own inspections and investigations including through appropriate third-party independent professionals selected by such party.

All financial data should be verified by the party including by obtaining and reading applicable documents and reports and consulting appropriate independent professionals. Exclusive Realty makes no warranties and/or representations regarding the veracity, completeness, or relevance of any financial data or assumptions. Exclusive Realty does not serve as a financial advisor to any party regarding any proposed transaction. All data and assumptions regarding financial performance, including that used for financial modeling purposes, may differ from actual data or performance. Any estimates of market rents and/or projected rents that may be provided to a party do not necessarily mean that rents can be established at or increased to that level. Parties must evaluate any applicable contractual and governmental limitations as well as market conditions, vacancy factors and other issues in order to determine rents from or for the property.

Legal questions should be discussed by the party with an attorney. Tax questions should be discussed by the party with a certified public accountant or tax attorney. Title questions should be discussed by the party with a title officer or attorney. Questions regarding the condition of the property and whether the property complies with applicable governmental requirements should be discussed by the party with appropriate engineers, architects, contractors, other consultants and governmental agencies. All properties and services are marketed by Exclusive Realty in compliance with all applicable fair housing and equal opportunity laws.

# INVESTMENT SUMMARY



## PROPERTY DESCRIPTION

Exclusive Realty is pleased to present this well established 3,000 SF Bar with a Class "C" Liquor License located in Detroit, Michigan. The owner has occupied the premises for several years with a successful business. The restaurant includes approximately 15,000 SF of land. The Kitchen and appliances are included.

The property has good visibility with over 11,000 Vehicles Per Day and is located in a densely populated area with over 159,000 Residents within a 3 Mile Radius ensuring lucrative sales.

## PROPERTY HIGHLIGHTS

- 3,000 square feet on 15,000 square feet of Land
- Bar with Class "C" Liquor License
- Kitchen and Appliances Included
- Over 11,000 Vehicles Per Day

DEMOGRAPHICS	0.25 MILES	0.5 MILES	1 MILE
Total Households	489	2,272	9,015
Total Population	871	4,128	17,224
Average HH Income	\$25,057	\$25,738	\$27,544



# LOCATION SUMMARY



14906 Schaefer Road, Detroit, MI 48227

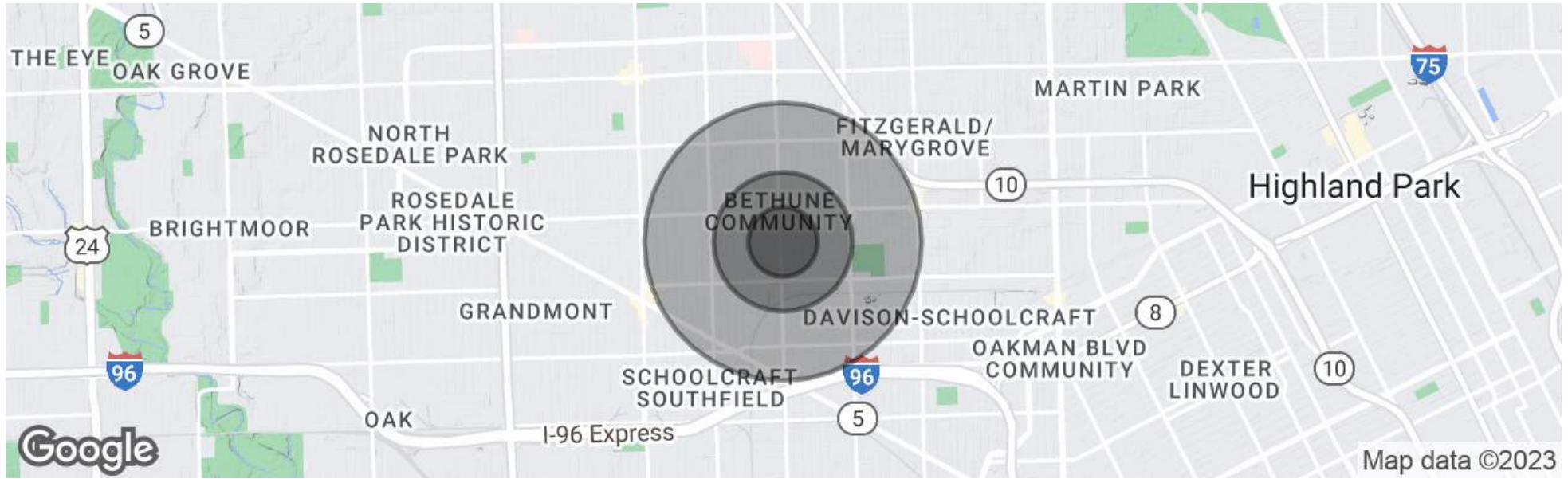
## LOCATION DESCRIPTION

Detroit is the largest and most populous city in the U.S. , State of Michigan, the largest U.S. city on the United States– Canada border, and the seat of Wayne County. The municipality of Detroit had a 2019 estimated population of 670,031, making it the 24th-most populous city in the United States. The metropolitan area, known as Metro Detroit, is home to 4.3 million people, making it the second-largest in the Midwest after the Chicago metropolitan area, and 14th largest in the United States. Regarded as a major cultural center, Detroit is known for its contributions to music and as a repository for art, architecture and design. Detroit is a major port on the Detroit River, one of the four major straits that connect the Great Lakes system to the Saint Lawrence Seaway.

The Detroit Metropolitan Airport is among the most important hubs in the United States. The City of Detroit anchors the second-largest regional economy in the Midwest, behind Chicago and ahead of Minneapolis- Saint Paul, and the 13th-largest in the United States. Detroit and its neighboring Canadian city Windsor are connected through a highway tunnel, railway tunnel, and the Ambassador Bridge, which is the second busiest international crossing in North America, after San Diego–Tijuana. Detroit is best known as the center of the U.S. automobile industry, and the "Big Three" auto manufacturers General Motors, Ford, and Fiat Chrysler are all headquartered in Metro Detroit.



# DEMOGRAPHICS MAP & REPORT



POPULATION	0.25 MILES	0.5 MILES	1 MILE
Total Population	871	4,128	17,224
Average Age	40.1	39.6	41.4

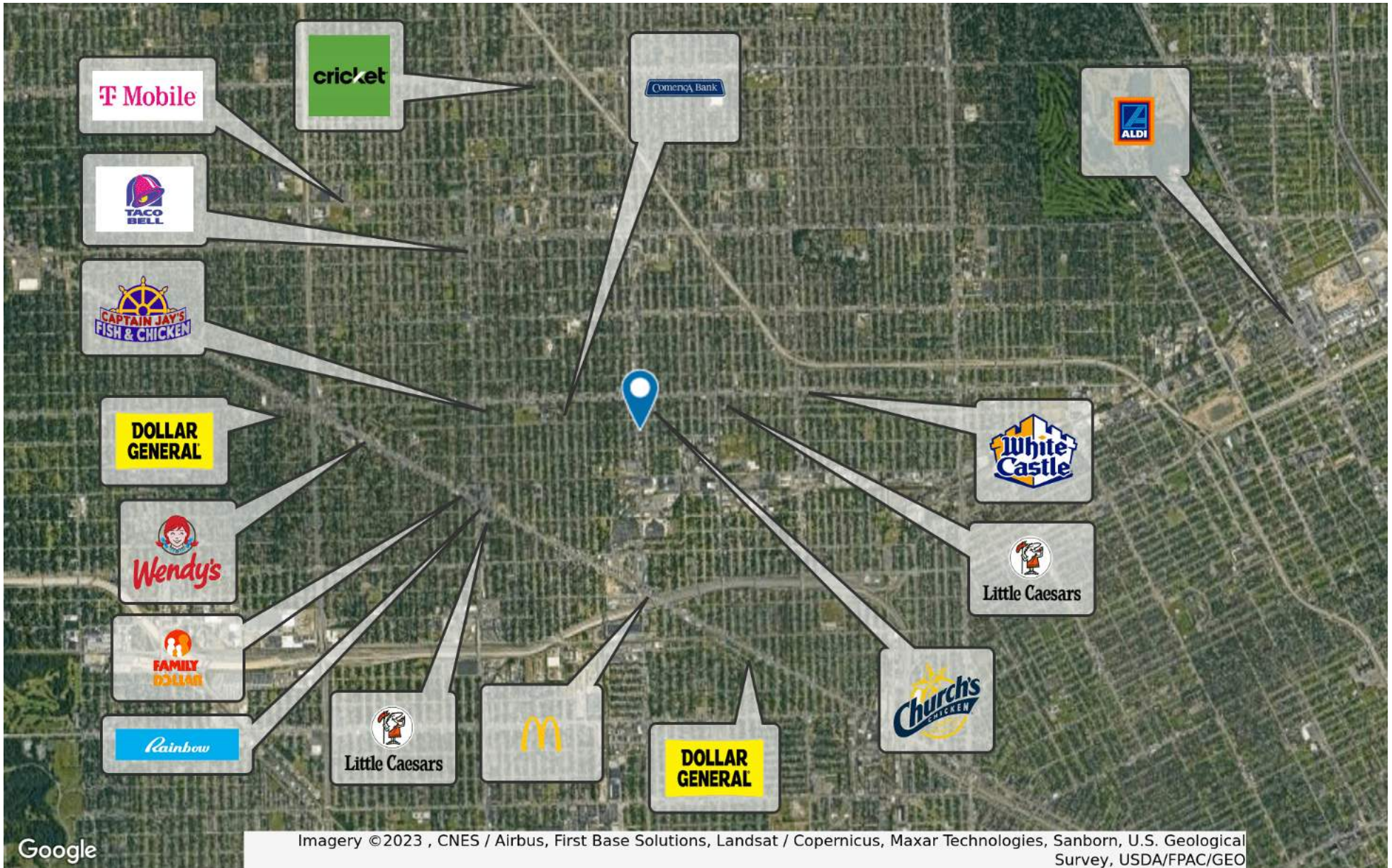
  

HOUSEHOLDS & INCOME	0.25 MILES	0.5 MILES	1 MILE
Total Households	489	2,272	9,015
# of Persons per HH	1.8	1.8	1.9
Average HH Income	\$25,057	\$25,738	\$27,544
Average House Value	\$40,181	\$42,528	\$46,056

\* Demographic data derived from 2020 ACS - US Census



# RETAILER MAP

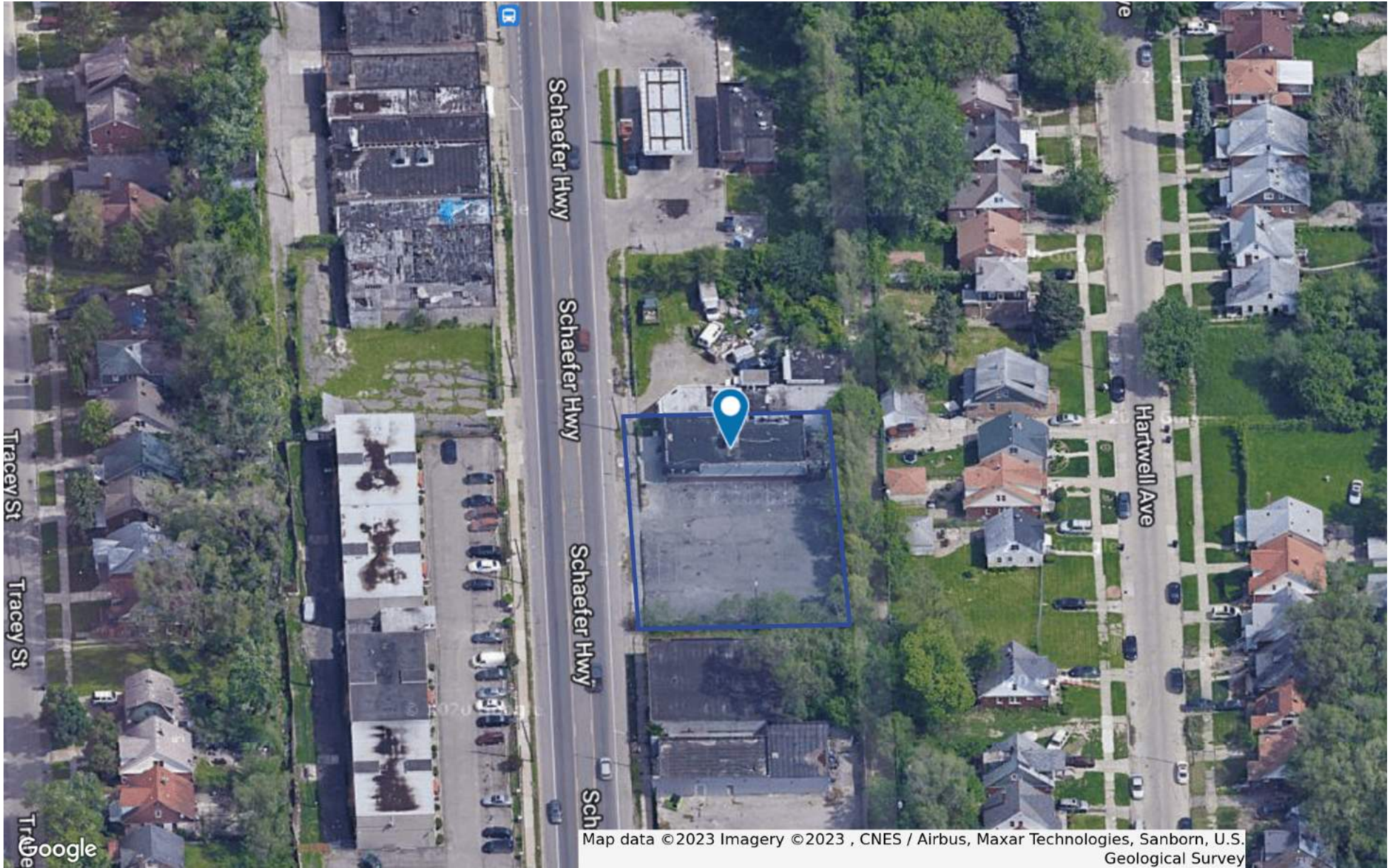


Google

Imagery ©2023 , CNES / Airbus, First Base Solutions, Landsat / Copernicus, Maxar Technologies, Sanborn, U.S. Geological Survey, USDA/FPAC/GEO



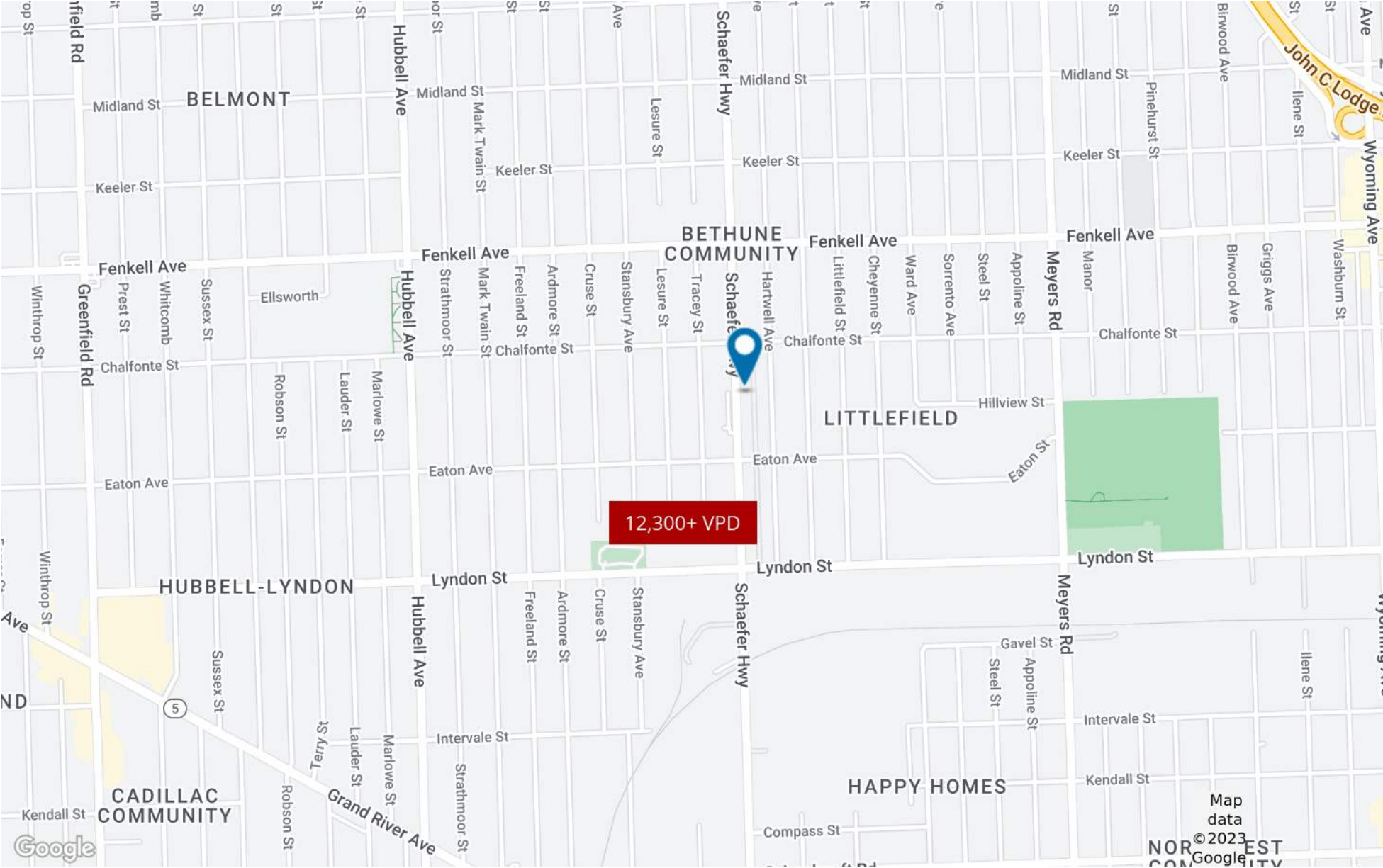
# AERIAL MAP



14906 Schaefer Road, Detroit, MI 48227



# PARCEL AND TRAFFIC COUNTS



14906 Schaefer Road, Detroit, MI 48227





# MEET THE TEAM



**TERRY EDMONDSON**

**President**

**D: 313.243.9013 | C: 313.590.0649**

**te@exclusive-realty.com**