

# FOR LEASE

FORMER SUPERMARKET  
18246 WYOMING AVENUE  
DETROIT, MICHIGAN 48221



**EXCLUSIVE**  
— REALTY —



## PROPERTY FEATURES:

- 16,200 square feet
- Vacant Building
- Low to Aggressive Lease Rates
- Ample Parking
- Close proximity to newly built Mumford High School and University of Detroit
- Possible Tenants: Supermarket, Dollar Store, Storage, Salvation Army, Medical Building, Beauty Supply
- Corner of Wyoming and Curtis



**FOR MORE INFO CONTACT: STEVE SAGMANI**

**313-963-7653**

28 W. Adams Avenue, Suite 1550  
Detroit, Michigan 48266  
steve@exclusive-realty.com

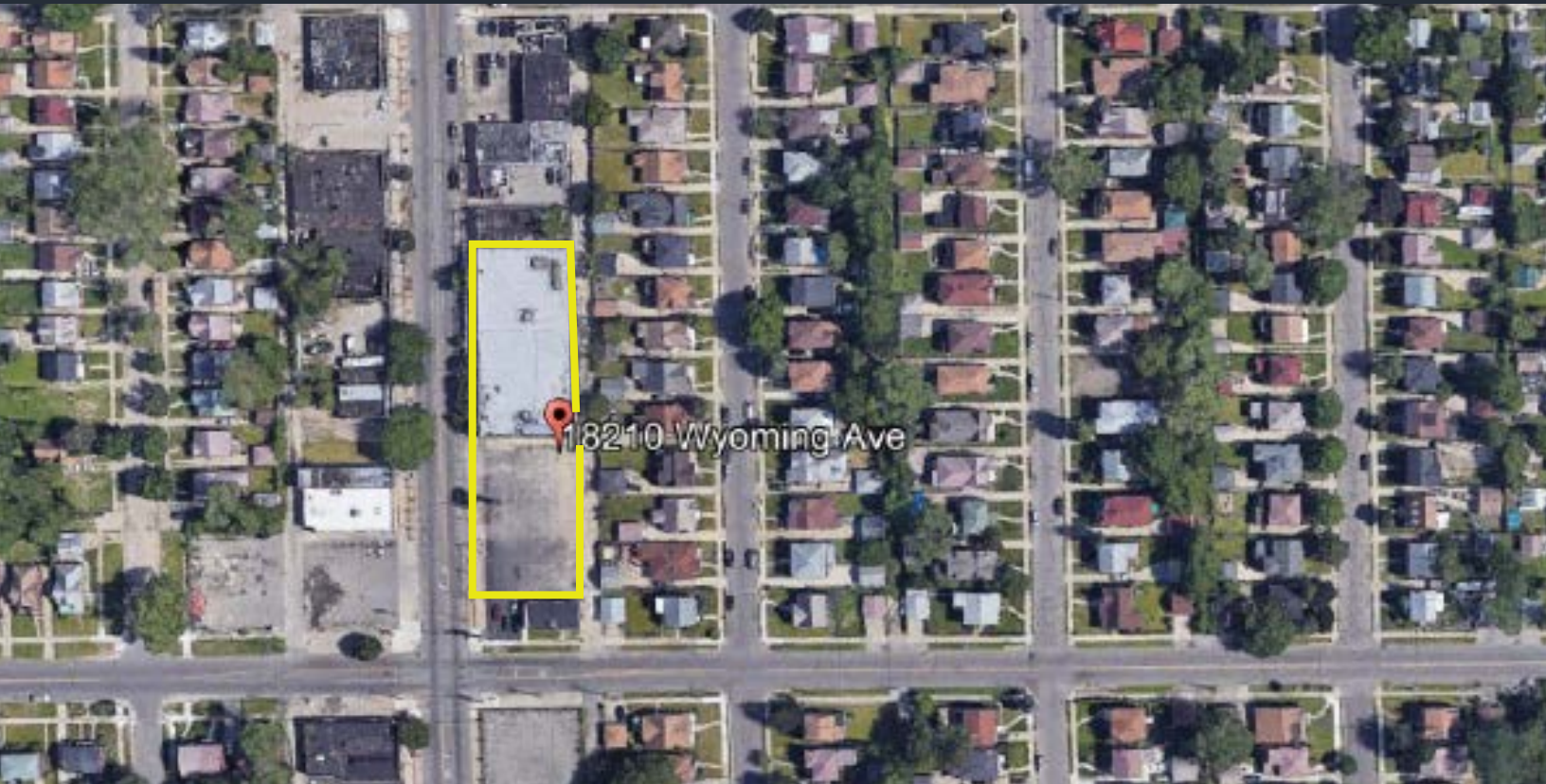
[WWW.EXCLUSIVE-REALTY.COM](http://WWW.EXCLUSIVE-REALTY.COM)

# FOR LEASE

FORMER SUPERMARKET  
18246 WYOMING AVENUE  
DETROIT, MICHIGAN 48221



**EXCLUSIVE**  
— REALTY —



## TRAFFIC COUNTS

INTERSECTION	CARS PER DAY
Wyoming & Curtis	8,540
Wyoming & W Mc Nichols	21,641
Wyoming & N M10	7,700

## DEMOGRAPHICS

	1 MILE	3 MILES	5 MILES
Total Households	7,789	60,394	164,398
Total Population	20,375	153,401	412,745
Average HH Income	\$35,108	\$33,718	\$35,641

**FOR MORE INFORMATION CONTACT:**

Steve Sagmani  
Managing Partner  
steve@exclusive-realty.com  
(313) 462-4755

# 313-963-SOLD

# FOR LEASE

FORMER SUPERMARKET  
18246 WYOMING AVENUE  
DETROIT, MICHIGAN 48221



# EXCLUSIVE

— REALTY —



**FOR MORE INFORMATION CONTACT:**

Steve Sagmani  
Managing Partner  
steve@exclusive-realty.com  
(313) 462-4755

# 313-963-SOLD

# FOR LEASE

FORMER SUPERMARKET  
18246 WYOMING AVENUE  
DETROIT, MICHIGAN 48221



**EXCLUSIVE**  
— REALTY —

Detroit is the largest and most populous city in the U.S. , State of Michigan, the largest U.S. city on the United States–Canada border, and the seat of Wayne County. The municipality of Detroit had a 2019 estimated population of 670,031, making it the 24th-most populous city in the United States. The metropolitan area, known as Metro Detroit, is home to 4.3 million people, making it the second-largest in the Midwest after the Chicago metropolitan area, and 14th largest in the United States. Regarded as a major cultural center, Detroit is known for its contributions to music and as a repository for art, architecture and design.

Detroit is a major port on the Detroit River, one of the four major straits that connect the Great Lakes system to the Saint Lawrence Seaway. The Detroit Metropolitan Airport is among the most important hubs in the United States. The City of Detroit anchors the second-largest regional economy in the Midwest, behind Chicago and ahead of Minneapolis-Saint Paul, and the 13th-largest in the United States. Detroit and its neighboring Canadian city Windsor are connected through a highway tunnel, railway tunnel, and the Ambassador Bridge, which is the second busiest international crossing in North America, after San Diego–Tijuana. Detroit is best known as the center of the U.S. automobile industry, and the "Big Three" auto manufacturers General Motors, Ford, and Fiat Chrysler are all headquartered in Metro Detroit.



**FOR MORE INFORMATION CONTACT:**

Steve Sagmani  
Managing Partner  
steve@exclusive-realty.com  
(313) 462-4755

**313-963-SOLD**